

Patient Clinical History

64-year-old man with the following history:

- Hypertension
- Smoker
- Non-insulin dependent diabetes
- Dyslipidemia

Current admission:

ACS episode without ST-segment elevation in another hospital with slight increase in Troponin with typical precordial pain

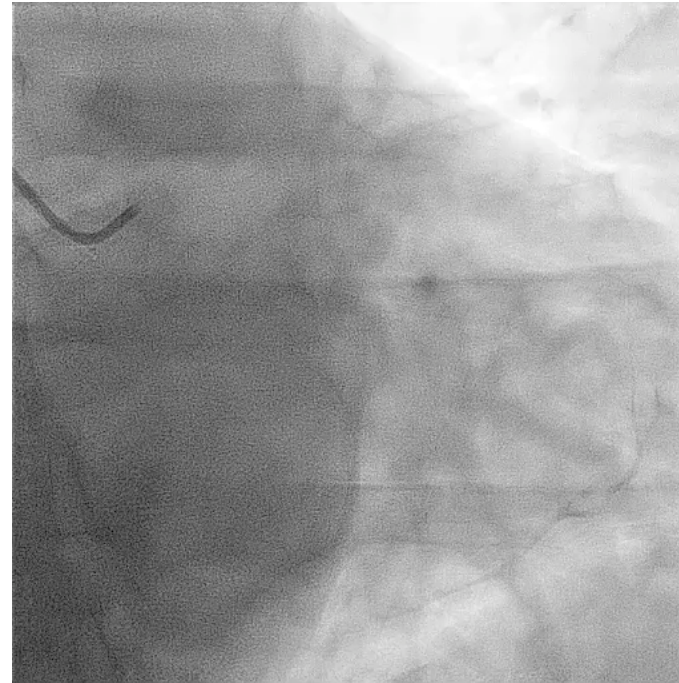
LAB: Creatinine 0.8, Hemoglobin 15.1, Tn I 675

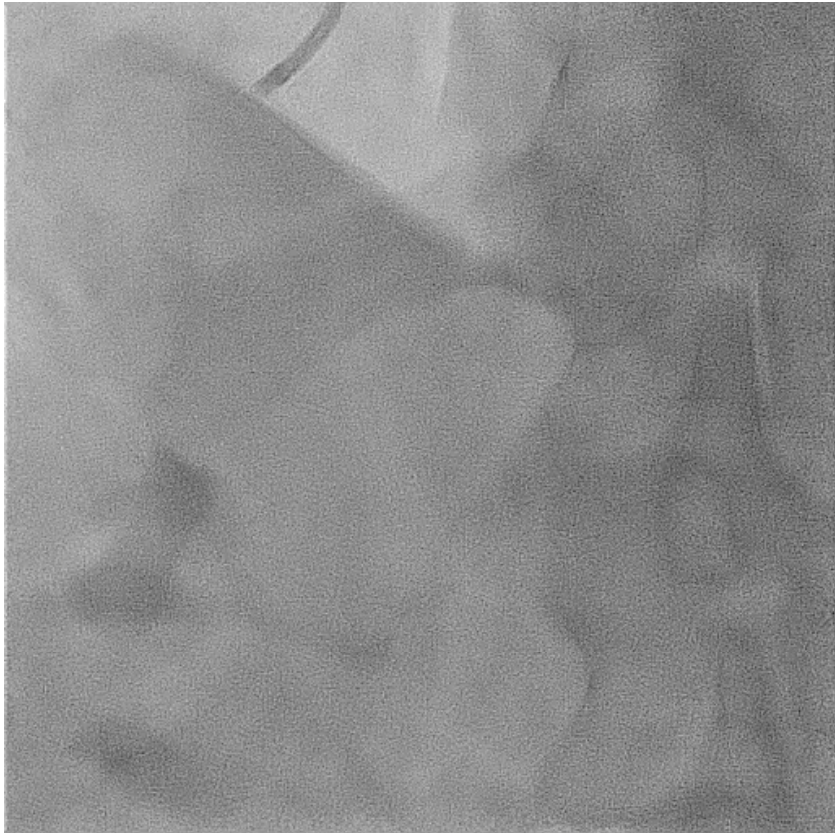
Angio Images

Diagnostic Coronariography

**No significant disease at
the level of the LMCA ,
Circumflex without
significant lesions**

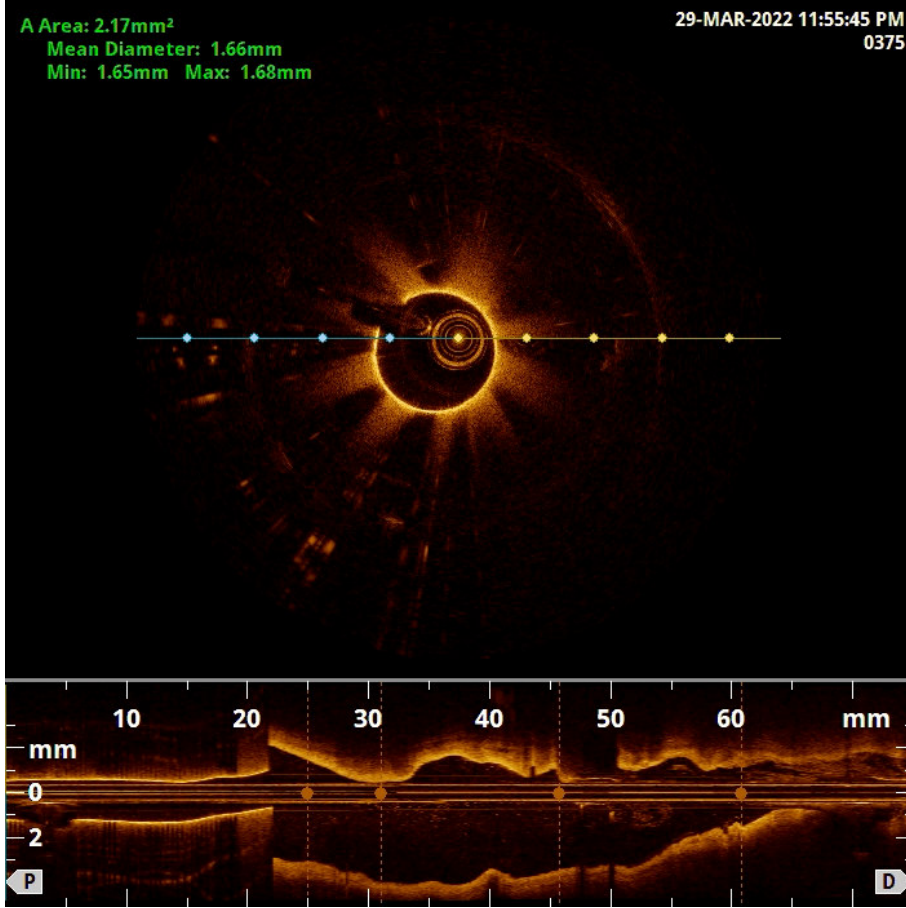
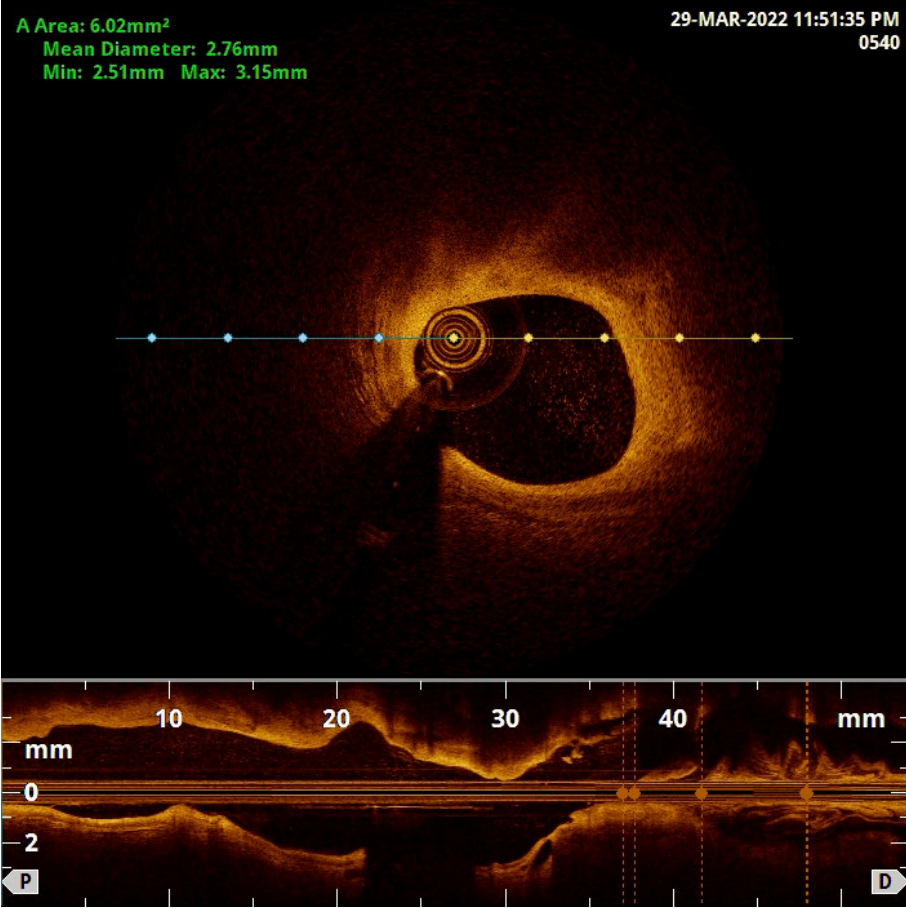
**LAD without significant
lesions. Collateral
circulation to the right
coronary artery**





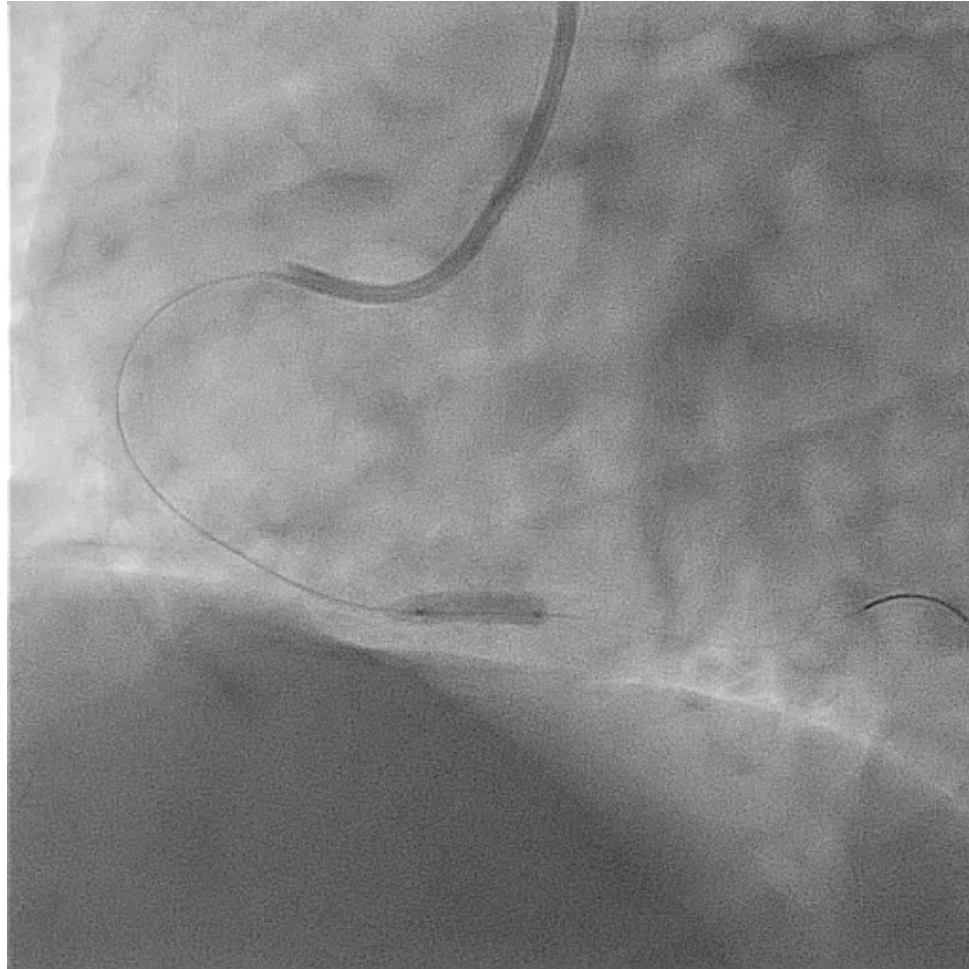
Dominant right coronary artery with severe proximal lesion and in the distal third with the appearance of a calcium nodule or thrombus?.

OCT Clinical Findings

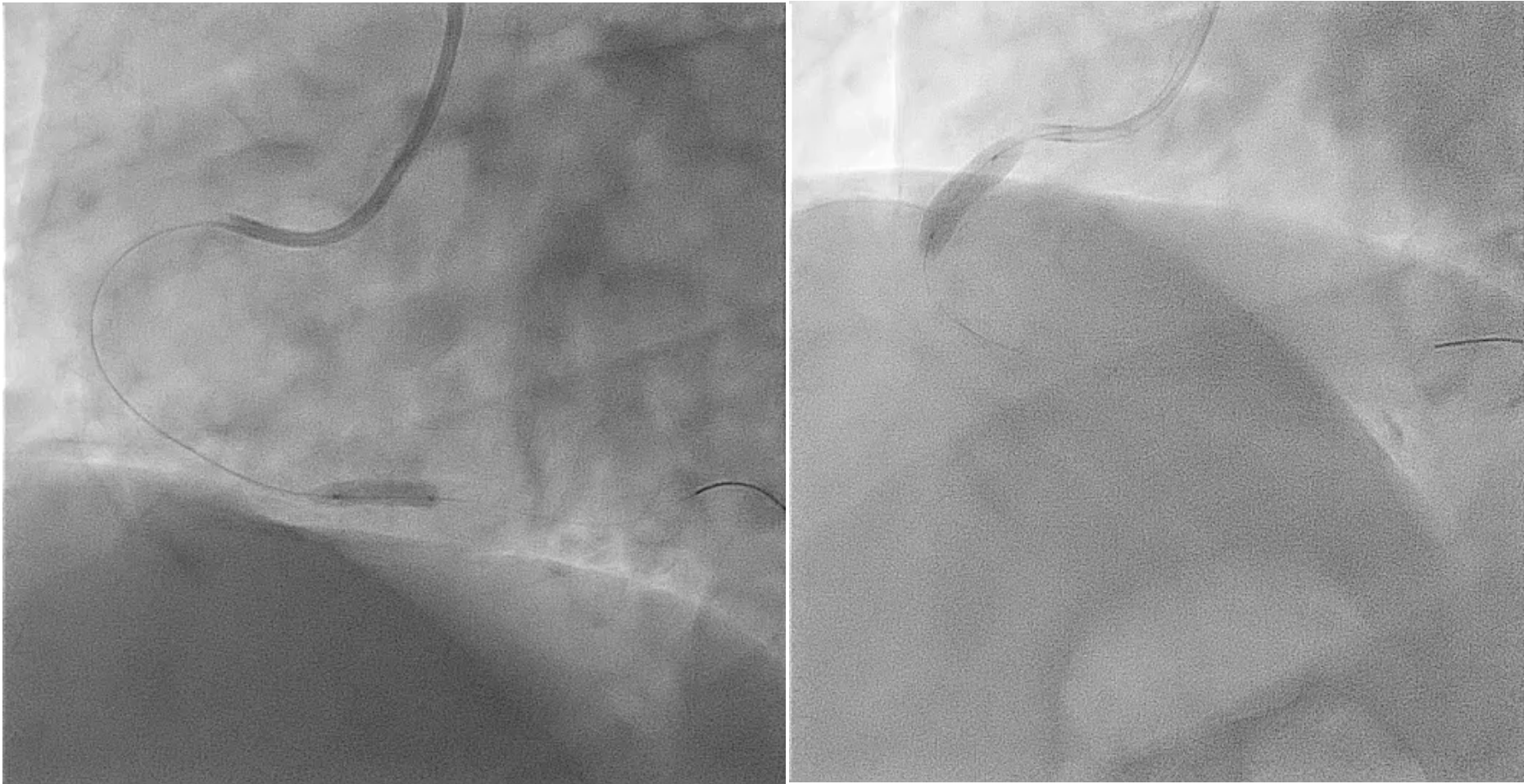


OCT showed a calcified nodule in distal RCA

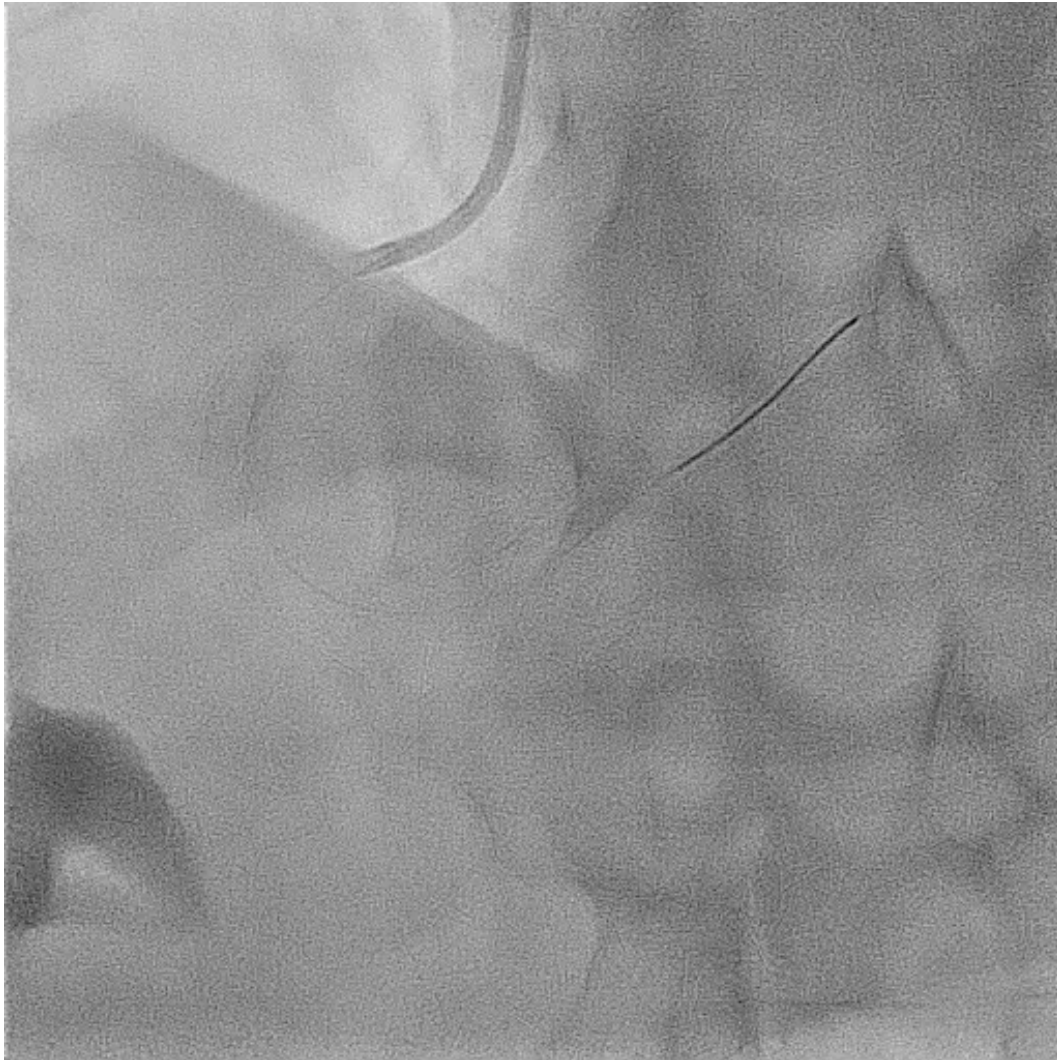
PCI Results



Pre-dilation with NC balloon catheter 3x12mm up to 20 ATM, without much success in the total expansion of the plaque.



IVL (intracoronary lithotripsy) ShockWave is performed with a 4x12mm balloon



A distal 4x19mm and proximal 4x12mm Biofreedom stent was implanted with good angiographic results, TIMI 3 flow in all branches.